



**MADE IN THE USA**, this recliner features a classic design with extra-plush cushioning that provides the comfort firefighters want. The heavy-duty hardwood frame with steel truss plate reinforced joints and heavy-duty mechanism provides the support and durability that firefighters need.

### Features

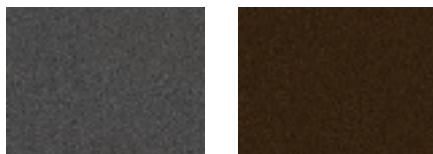
- Tested to withstand 450 lb. weight capacity
- Rocking recliner only
- 1 1/8" Hardwood seat frame joined by 2 1/2" lag bolts, doweled joints and glue
- 7-gauge all-steel mechanism designed to withstand 450 lbs. of everyday use
- Heat-tempered coil seat springs reinforced with steel support bars
- Double lumbar spring design for added support
- High-density (2.3# - 2.5#) seat foam for great support and longevity
- Matching double-reclining sofa and console loveseat are available

### Dimensions

- 43"W x 41.5"D x 45"H
- Seating Area: 20.5"SH x 18.5"SW x 21"SD
- Arm height: 28.5"
- Open Depth: 80"

### Fabric details

- NOTE - fabric shown is not actual fabric. Colors shown below are accurate.
- 100% Microfiber fabric
- Easy to clean and ideal for high traffic environments
- Durable, exceeds 100,000 double rubs (Wyzenbeek - wire screen abrasant)



### Warranty

- 3-YEAR WARRANTY on mechanism
- 3-YEAR WARRANTY on frame, seat spring & foam
- 1-YEAR WARRANTY on upholstery
- 1-YEAR LABOR